



Poplar Bluff Stock Farm



L&S LIVESTOCK

BRONYX ANGUS

5TH ANNUAL BULL SALE

TUESDAY, MARCH 23, 2021 - 1:00 PM

DRYLAND CATTLE TRADING CORP. - VETERAN, AB

WELCOME TO OUR FIFTH ANNUAL POPLAR BLUFF, L & S LIVESTOCK AND BRONYX ANGUS BULL SALE



Taylor Family

The Taylor Family - Box 55, Chauvin, AB T0B 0V0
Phone: 780-858-2435 - John's Cell: 780-806-3395
Email: jktaylor@telusplanet.net



Well another year has passed and what a year it was! We found new ways to interact and do business and discovered that life really does go on – it just looks a little different.

Welcome to our 5th Annual Sale. Because life goes on and so do we, you'll notice a few differences this year.

The Weeks family of Twin Anchor Charolais has grown to the point where they could host their own sale. This gave us the chance to partner with new guests, the Brosinsky and Mawbey families – and now you can get to know them too! L & S Livestock have primarily yearling Black Angus bulls and Bronyx Angus have 2 year old Black Angus bulls.

We are also into our second year of COVID-19 restrictions on gatherings. Last year was immensely stressful, given that our sale was the week after restrictions on gatherings were announced. This year, it feels like déjà vu all over again, but it's not a surprise this time.

As we did last year, we're asking everyone to keep an eye on the Dryland Cattle Trading Corp website for any updates to their capacities, etc. Also as we did last year, we respectfully ask that only one member of an operation attend on sale day and to please advise the staff at Dryland if you intend to come to the sale. They are the best at what they do and we appreciate the care that they provide to our bulls and our customers on sale day.

What isn't new is the sort of bulls we've raised – All are virgin 2 year olds and none are marketed off the farm before the sale. We strive for good feet, moderate birthweights and good dispositions. The bulls have been brought along much the same as in the past – running on pasture at home as yearlings and then slowly started on more grain along with free choice hay and silage. We still hand feed the bulls – it's a little more work but we feel confident with our assessment of the boys' dispositions when we are going through them every morning.

We have a range of bulls this year – some powerful individuals who will sire calves that really push the scales down and there are a few who I wouldn't hesitate to use on smaller, second calvers or even heifers. We are confident that we have something that will appeal to you!

We had a bit of a lopsided calf crop born in 2019 – Our big old boy, Almond, gave us mostly bull calves and our power bull, Chancellor, threw mostly heifers (not a bad thing because his daughters are phenomenal females!). This is the reason for the larger number of tan bulls that we're offering. We used a new bull to breed our heifers and have a couple of sons catalogued – Encore is a WCR Commissioner son who exceeded our expectations on the calving ease side of things and then we were pleasantly surprised with the dispositions these calves had. This year will be the last year that we have any Blast-Off progeny – His calves were always born easily and were very vigorous at birth and then both bulls and females matured into very versatile individuals.

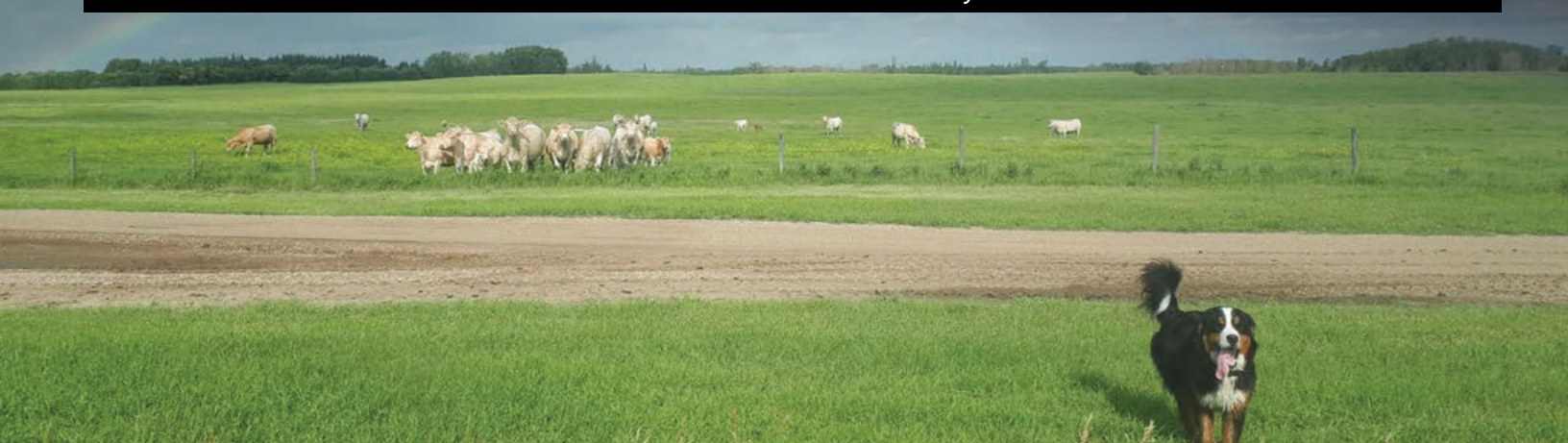
As in our previous 4 sales, we intend to haul the bulls to Veteran the weekend before the sale – as always, please call us if you'd like to come and view them at the farm before they go south, or if you're closer to Veteran, we welcome you to come and see them in the days leading up to the sale.

Our sale will be broadcast on DLMS again this year, or if you would prefer, you may contact any of the sale day phone numbers listed. We will do our best to find a good fit for your program.

If there is anything I missed, or if you'd like more information about any of the bulls or our program in general, just give us a call – we love to hear from our friends and customers in the cattle industry!

As always, we'd like to send a huge thank you to all who have supported our program over the years. Your business and confidence in what we do is very much appreciated!

John & Kirsten & Family



FIFTH ANNUAL POPLAR BLUFF, L & S LIVESTOCK & BRONYX ANGUS BULL SALE

SALE DATE & TIME:

Tuesday, **March 23, 2021**
@ 1:00 PM

SALE LOCATION:

Dryland Cattle Trading Corp
Veteran, AB

SELLING:

23 Two-Year-Old Charolais Bulls
12 Yearling Black Angus Bulls
21 Two-Year-Old Black Angus Bulls
1 Commercial Bull

SALE STAFF

| | |
|----------------------------|--------------|
| Kirk Goldsmith, Auctioneer | 403-575-5654 |
| Andrew Reeleder, Ringman | 403-848-1260 |

SALE DAY PHONES

| | |
|-----------------------------|--------------|
| Dryland Cattle Trading Corp | 403-575-3772 |
| John Taylor | 780-806-3395 |
| Kirsten Taylor | 780-806-9315 |
| Lyle Brosinsky | 306-753-7809 |
| Sheann Brosinsky | 306-753-9387 |
| Owen Mawbey | 306-228-8235 |
| Bryce Mawbey | 587-433-8600 |
| Darwin Graham | 403-575-7567 |
| Kurt Cole | 403-575-5388 |
| Robbie Chomik | 780-336-6424 |

**DRYLAND CATTLE
TRADING CORP.**

VIEW THE CATALOGUE ONLINE

www.buyagro.com

***All bulls will have received both shots of
Fusogard to protect from foot rot.***

SALE DAY INFORMATION

Delivery

Any bulls picked up on sale day will be eligible for a \$100 sale credit.

If you aren't set up to take your bull and would like him delivered closer to breeding season, we'd prefer if you put insurance on before he goes back to the farm. We take every care with the bulls that do go back home, but going to town and then home again resets the pecking order. Larry Toner of Stockmens Insurance will be in attendance on sale day to assist you.

Buyers must take delivery of their bulls by May 1, 2021.

Delivery of bulls is available to central points and in most cases, right to your farm or ranch.

ONLINE BIDDING:

Can't make it to the sale? Watch & Bid Online.

With DLMS you can Watch, Listen & Bid on your computer just like you were there with online bidding over the internet

Instructions for Viewing And Bidding At the Sale

Visit www.dlms.ca, Fill out the registration form located under registration and sign-up for your free user account to select a username and password.

BIDDERS - To be approved as a bidder, Log in and click BUYER APPROVAL tab, select the sale you are interested in bidding at and click sign up.

For more information or for help getting approved Call:

Mark Shologan - 780-699-5082 or DLMS Purebred Team 780.991-3025

Direct Livestock Marketing Systems
We're Making the Connection

DLMS
www.dlms.ca

To find an agent or sale near you today
visit www.dlms.ca

Purebred Sales • Daily Presort Sales
Direct Off-farm Sales every Thursdays at 10:00 am

**PLEASE BRING YOUR
CATALOGUE WITH YOU
ON SALE DAY**



LOT 1

1

THJ **GIVE 'ER** 13G
PMC804907 THJ 13G APRIL 4, 2019

CIRCLE CEE LEGEND 307A
LAE CHANCELLOR 5122C PMC368392
LAE ANGIE 320A
MVY AWESOME 1A
THJ DIPPITY-DO 20D PFC737742
THJ PARIS 8X

| POLLED | |
|------------|-----|
| BW | 83 |
| ACT WW | 720 |
| AGE OF DAM | 3 |

| EPDS | BW | WW | YW | MILK | TM |
|------|-----|----|----|------|----|
| | 0.2 | 42 | 86 | 22 | 43 |

Raising bulls like this has elevated 20D to favourite young cow status. Thick, hairy and smooth as they come, this bull will turn some heads.



LOT 2

2

THJ **GAUCHO** 25G
PMC807703 THJ 25G APRIL 21, 2019

SPARROWS ELDORADO 361L
LAE ALMOND 3122A PMC359206
KCH CHOCOLATE CHIP 3W
MNE ZOAR 5Z
THJ BOLERO 24B PFC418193
THJ YOLANDA 4Y

| POLLED | |
|------------|-----|
| BW | 88 |
| ACT WW | 680 |
| AGE OF DAM | 5 |

| EPDS | BW | WW | YW | MILK | TM |
|------|-----|----|----|------|----|
| | 0.2 | 54 | 97 | 11 | 38 |

This tan Almond son is out of a cow who consistently throws smaller calves. He should be a calving ease specialist.

3

THJ **GRIMALDI** 30G
PMC807700 THJ 30G APRIL 22, 2019

SPARROWS ELDORADO 361L
LAE ALMOND 3122A PMC359206
KCH CHOCOLATE CHIP 3W
LAE SORENTO 687S
THJ ARIBELLA 14A PFC411862
THJ TREMBLE 47T

POLLED

BW 91

ACT WW 670

AGE OF DAM 6

| EPDS | BW | WW | YW | MILK | TM |
|------|-----|----|----|------|----|
| | 0.1 | 47 | 89 | 9 | 32 |

This bull is out of a cow who keeps raising solid, usable bulls no matter how we breed her. This guy will add some muscle shape to your calf crop.



LOT 3

4

THJ **GANGSTA** 32G
PMC807715 THJ 32G APRIL 23, 2019

MERIT ROUNDUP 9508W
LAE BLAST-OFF 425B PMC358879
LAE JAZZLAND 123Y
LAE X-ACT BLUE 92X
THJ STARBABY 4Z PFC405504
THJ STARDUST 1X

POLLED

BW 93

ACT WW 710

AGE OF DAM 7

| EPDS | BW | WW | YW | MILK | TM |
|------|-----|----|----|------|----|
| | 1.1 | 52 | 93 | 17 | 43 |

This is the third full brother that we've sold through our sale. Eye appeal and a great disposition come standard with this package. In 2019, his full brother was a high seller to Jackson Bros. and last year, Craig Brown purchased another full brother.



LOT 4

5

THJ **GAVIN** 44G
PMC804913 THJ 44G APRIL 25, 2019

CIRCLE CEE LEGEND 307A
LAE CHANCELLOR 5122C PMC368392
LAE ANGIE 320A
LAE SORENTO 687S
THJ PRISTINE 60Z PFC406612
MNE PARIS 120P

POLLED

BW 94

ACT WW 680

AGE OF DAM 7

| EPDS | BW | WW | YW | MILK | TM |
|------|-----|----|----|------|----|
| | 1.1 | 47 | 94 | 16 | 40 |

The Chancellor cross with this cow gave us a little more frame than we usually get from her. This guy is smooth and athletic.



LOT 5

6

THJ **GOODTIMES** 45G
PMC807712 THJ 45G APRIL 25, 2019

SPARROWS ELDORADO 361L
LAE ALMOND 3122A PMC359206
KCH CHOCOLATE CHIP 3W
SKW MERCHANT 32A
THJ CHARM 4C PFC697060
THJ PRESTO 32Z

POLLED

BW 89

ACT WW 630

AGE OF DAM 4

| EPDS | BW | WW | YW | MILK | TM |
|------|-----|----|----|------|----|
| | 0.6 | 50 | 90 | 10 | 34 |

This guy's dam raised one of our high sellers last year. Like the other Almond sons, he has terrific feet under him.



LOT 6



LOT 7

7

THJ GO GET 'EM 53G
 PMC807713 THJ 53G APRIL 28, 2019

SPARROWS ELDORADO 361L
 LAE ALMOND 3122A PMC359206
 KCH CHOCOLATE CHIP 3W
 AHT WHIP 3Y
 THJ BIANCA 14B PFC738785
 THJ ZARA 5Z

| POLLED | |
|------------|-----|
| BW | 93 |
| ACT WW | 750 |
| AGE OF DAM | 5 |

| EPDS | BW | WW | YW | MILK | TM |
|------|-----|----|----|------|----|
| | 1.4 | 52 | 95 | 12 | 38 |

A standout since he was a calf, this guy checks all the boxes. Thick, with a ton of top to him, he has a flawless foot structure.



LOT 8

8

THJ GHOSTBUSTER 54G
 PMC807718 THJ 54G APRIL 28, 2019

MERIT ROUNDUP 9508W
 LAE BLAST-OFF 425B PMC358879
 LAE JAZZLAND 123Y
 MVY AWESOME 1A
 THJ DAYDREAM 75D PFC737739
 THJ SUNBEAM 59Y

| POLLED | |
|------------|-----|
| BW | 91 |
| ACT WW | 620 |
| AGE OF DAM | 3 |

| EPDS | BW | WW | YW | MILK | TM |
|------|-----|----|----|------|----|
| | 2.6 | 43 | 79 | 16 | 37 |

This bull has a profile that screams "herdbull." Round it out with a super disposition and a great way of travelling. His maternal brother was our high seller last year, going to the Jackson Bros. at Unity.



9

THJ **GALAXY** 62G
PMC807697 THJ 62G APRIL 30, 2019

SPARROWS ELDORADO 361L
LAE ALMOND 3122A PMC359206
KCH CHOCOLATE CHIP 3W
THJ HELIX 1U
THJ YAMMA 6Y SFC411518
THJ WANDA 22W

| POLLED | |
|------------|-----|
| BW | 88 |
| ACT WW | 800 |
| AGE OF DAM | 8 |

| EPDS | BW | WW | YW | MILK | TM |
|------|-----|----|----|------|----|
| | 0.9 | 53 | 97 | 12 | 39 |

Our heaviest calf at weaning, this bull got the best out of both sides of his pedigree. His dam passed on her temperament and hair coat and he is the same shade of butterscotch as his sire.

10

THJ **GRANITE** 63G
QPMC804920 THJ 63G APRIL 30, 2019

CIRCLE CEE LEGEND 307A
LAE CHANCELLOR 5122C PMC368392
LAE ANGIE 320A
K-COW RED KITKAT 24X
THJ BARISTA 71B Q5FC418083
THJ TRISTA 56T

| POLLED | |
|------------|-----|
| BW | 92 |
| ACT WW | 770 |
| AGE OF DAM | 5 |

| EPDS | BW | WW | YW | MILK | TM |
|------|-----|----|----|------|----|
| | 0.9 | 46 | 93 | 23 | 46 |

Deep, deep, deep! You want to add pounds in the fall, this guy will sire a group of calves that will be very well received. Papered as polled but he had small scurs that grew as a yearling.



11

THJ **GALLIANO** 69G
PMC804926 THJ 69G MAY 2, 2019

CIRCLE CEE LEGEND 307A
LAE CHANCELLOR 5122C PMC368392
LAE ANGIE 320A
THJ LUKE 7X
THJ ALICE 59A SFC411869
THJ WINK 55W

| POLLED | |
|------------|-----|
| BW | 94 |
| ACT WW | 730 |
| AGE OF DAM | 6 |

| EPDS | BW | WW | YW | MILK | TM |
|------|-----|----|----|------|----|
| | 0.7 | 44 | 90 | 24 | 46 |

Out of one of the favourite cow families on the farm, this bull will do nothing but good wherever he goes.





LOT 12

12

THJ **GILLIGAN** 74G
PMC807704 THJ 74G MAY 3, 2019

SPARROWS ELDORADO 361L
LAE ALMOND 3122A PMC359206
KCH CHOCOLATE CHIP 3W
LAE FLO- RIDA 1111Y
THJ BAMBI 92B PFC418090
MNE RAMONA 26R

POLLED

| | |
|-------------------|-----|
| BW | 91 |
| ACT WW | 720 |
| AGE OF DAM | 5 |

| EPDS | BW | WW | YW | MILK | TM |
|------|-----|----|-----|------|----|
| | 1.4 | 54 | 102 | 16 | 43 |

With a small head and neat front end, this bull will give you peace of mind next calving season.



LOT 13

13

THJ **GUNNER** 83G
QPMC807696 THJ 83G MAY 6, 2019

SPARROWS ELDORADO 361L
LAE ALMOND 3122A PMC359206
KCH CHOCOLATE CHIP 3W
FOOTPRINTS SIR 711T
THJ X-TRA TICKLISH 20X SFC392502
THJ TRISTA 56T

POLLED

| | |
|-------------------|-----|
| BW | 96 |
| ACT WW | 710 |
| AGE OF DAM | 9 |

| EPDS | BW | WW | YW | MILK | TM |
|------|-----|----|----|------|----|
| | 1.2 | 50 | 91 | 15 | 40 |

This buff coloured bull has stood out since he was on pasture beside his dam. He has excellent muscle expression, lots of top and a laid back disposition.



LOT 14

14

THJ **GALAHAD** 87G
PMC804956 THJ 87G MAY 8, 2019

CIRCLE CEE LEGEND 307A
LAE CHANCELLOR 5122C PMC368392
LAE ANGIE 320A
MVY AWESOME 1A
THJ DALLIANCE 17D PFC737737
THJ SASSAFRASS 39Y

POLLED

| | |
|-------------------|-----|
| BW | 92 |
| ACT WW | 700 |
| AGE OF DAM | 3 |

| EPDS | BW | WW | YW | MILK | TM |
|------|-----|----|----|------|----|
| | 2.3 | 47 | 94 | 20 | 44 |

This Chancellor son has loads of length and athleticism.



LOT 15

15

THJ **GNARLY** 108G
PMC807702 THJ 108G MAY 31, 2019

SPARROWS ELDORADO 361L
LAE ALMOND 3122A PMC359206
KCH CHOCOLATE CHIP 3W
AHT WHIP 3Y
THJ ANTSINMYPANTS 33A PFC411865
THJ SASSAFRASS 39Y

POLLED

| | |
|-------------------|-----|
| BW | 89 |
| ACT WW | 640 |
| AGE OF DAM | 6 |

| EPDS | BW | WW | YW | MILK | TM |
|------|-----|----|----|------|----|
| | 1.0 | 47 | 88 | 13 | 36 |

This young bull has fit in very nicely with his older contemporaries. He has the Almond colouring with a pinch more hair from his dam's side and great feet under him.

16

AHT **CHANCELLOR** 902G
PMC807779 AHT 902G MARCH 24, 2019

CIRCLE CEE LEGEND 307A

LAE CHANCELLOR 5122C PMC368392

LAE ANGIE 320A

LAE BLAST-OFF 425B

AHT BUBBLES 716E PFC737996

AHT BUBBLES 419B

POLLED

BW 86

ACT WW 620

AGE OF
DAM 2

| EPDS | BW | WW | YW | MILK | TM |
|------|-----|----|-----|------|----|
| | 1.1 | 54 | 102 | 21 | 48 |

Another Chancellor son with tremendous length of body. This guy will cover lots of ground.



LOT 16

17

AHT **ENCORE** 905G
PMC807771 AHT 905G MARCH 28, 2019

WCR COMMISSIONER 593 P

JWX ENCORE 576E PMC741203

BEM BULLET 76C

LAE BANDIT 4157B

AHT DREAM CHICK 718E PFC737831

AHT DREAM CHICK 6X

POLLED

BW 74

ACT WW 650

AGE OF
DAM 2

| EPDS | BW | WW | YW | MILK | TM |
|------|------|----|----|------|----|
| | -1.4 | 41 | 88 | 21 | 41 |

One of the two Encore sons in this year's sale, this smaller bull would be safe to use on heifers.



LOT 17

18

AHT **ENCORE** 909G
PMC807772 AHT 909G APRIL 18, 2019

WCR COMMISSIONER 593 P

JWX ENCORE 576E PMC741203

BEM BULLET 76C

LAE BLAST-OFF 425B

AHT WIGGLE 713E PFC737851

AHT WIGGLE 4Y

POLLED

BW 72

ACT WW 620

AGE OF
DAM 2

| EPDS | BW | WW | YW | MILK | TM |
|------|------|----|----|------|----|
| | -2.5 | 40 | 76 | 20 | 40 |

A little larger than his half brother, but this bull is built the right way for breeding to second calvers or even heifers.



LOT 18

19

AHT **ALMOND** 912G
PMC807699 AHT 912G APRIL 23, 2019

SPARROWS ELDORADO 361L

LAE ALMOND 3122A PMC359206

KCH CHOCOLATE CHIP 3W

MNE MOST IMPRESSED 28M

AHT TULIP 10Y PFC397483

AHT TULIP NICKEL 8T

POLLED

BW 93

ACT WW 710

AGE OF
DAM 8

| EPDS | BW | WW | YW | MILK | TM |
|------|-----|----|----|------|----|
| | 1.6 | 50 | 95 | 11 | 36 |

This may be the most laid back bull in the pen this year. He has great muscle shape in a nice tidy package.



LOT 19



LOT 20

20

AHT **ALMOND** 913G
PMC807711 AHT 913G APRIL 23, 2019

SPARROWS ELDORADO 361L
LAE **ALMOND 3122A** PMC359206
KCH CHOCOLATE CHIP 3W

SKW MERCHANT 32A
AHT **WILLA 511C** PFC420508
AHT **WILLA 213Z**

POLLED

BW 84

205 DW 700

AGE OF DAM 4

| EPDS | BW | WW | YW | MILK | TM |
|------|-----|----|----|------|----|
| | 1.1 | 52 | 93 | 9 | 35 |

Like the other Almond sons, this bull has excellent feet and legs and lots of length.



LOT 21

21

AHT **BLAST OFF** 921G
PMC807721 AHT 921G MAY 4, 2019

MERIT ROUNDUP 9508W
LAE **BLAST-OFF 425B** PMC358879
LAE JAZZLAND 123Y
SKW MERCHANT 32A
AHT **WHISPER 608D** PFC737753
AHT **WHISPER 307A**

POLLED

BW 88

205 DW 660

AGE OF DAM 3

| EPDS | BW | WW | YW | MILK | TM |
|------|-----|----|----|------|----|
| | 1.1 | 45 | 79 | 16 | 38 |

Out of a quiet, young cow, this bull is a great example of our Blast-Off progeny; long, clean fronted and really nice to be around.

22

AHT **CHANCELLOR** 922G
PMC807767 AHT 922G MAY 10, 2019

CIRCLE CEE LEGEND 307A
LAE CHANCELLOR 5122C PMC368392
 LAE ANGIE 320A
 LAE FLO- RIDA 1111Y
AHT DREAM CHICK 611D PFC734379
 AHT DREAM CHICK 6X

| POLLED | |
|------------|-----|
| BW | 91 |
| 205 DW | 640 |
| AGE OF DAM | 3 |

| EPDS | BW | WW | YW | MILK | TM |
|------|-----|----|-----|------|----|
| | 1.2 | 51 | 101 | 22 | 48 |

This Chancellor son has lots of length and a great hair coat.



LOT 22

23

AHT **ALMOND** 924G
PMC807710 AHT 924G MAY 14, 2019

SPARROWS ELDORADO 361L
LAE ALMOND 3122A PMC359206
 KCH CHOCOLATE CHIP 3W
 LAE FLO- RIDA 1111Y
AHT WILLA 515C PFC420503
 AHT WILLA 24W

| POLLED | |
|------------|-----|
| BW | 92 |
| 205 DW | 600 |
| AGE OF DAM | 4 |

| EPDS | BW | WW | YW | MILK | TM |
|------|-----|----|-----|------|----|
| | 1.6 | 56 | 103 | 12 | 40 |

This young bull is very tidy with a smooth front end.



LOT 23

REFERENCE SIRE

A

LAE **ALMOND** 3122A
PMC359206 LAE 3122A APRIL 4, 2013

SPARROWS ALLIANCE 513G
SPARROWS ELDORADO 361L PMC257824
 SPARROWS HEARTBREAK 261J
 CRYSTAL D PIERCE 40P
KCH CHOCOLATE CHIP 3W QPFC374056
 SVS NECTAR 12N

| POLLED | |
|--------|--|
|--------|--|

| EPDS | BW | WW | YW | MILK | MTL |
|------|-----|----|-----|------|-----|
| | 0.9 | 62 | 107 | 6 | 37 |

Almond is a tan Eldorado son who consistently calves easily, polls those calves and gives them fantastic feet. We have used him on a variety of cow types and have been very happy all around. The daughters have lots of milk and are highly maternal.



A



B

B

PMC741203

JWX **ENCORE** 576E
JWX 576E MARCH 11, 2017

WCR COUNTY LINE 3132 P

WCR COMMISSIONER 593 P PMC710600

WCR MS BRAVO 399 P

JWX SILVER BULLET 524W

BEM BULLET 76C PFC695669

BEM BLUEGRASS JUNCTION 10W

POLLED

| EPDS | BW | WW | YW | MILK | MTL |
|------|------|----|----|------|-----|
| | -4.8 | 42 | 88 | 22 | 43 |

Encore was purchased from Wilgenbusch Charolais as a heifer bull. We have been impressed with the calves he has sired. Aside from the calving ease and vigour of these calves, Encore passes on his quiet disposition and excellent foot structure. We are looking forward to calving out the first daughters that we kept from him later this spring.



C

C

LAE **CHANCELLOR** 5122C
PMC368392 LAE 5122C FEBRUARY 25, 2015

LT LEDGER 0332 P

CIRCLE CEE LEGEND 307A PMC351853

CIRCLE CEE STUNNING 125Y

MERIT ROUNDUP 9508W

LAE ANGIE 320A PFC411978

LAE YASMIN 156Y

POLLED

| EPDS | BW | WW | YW | MILK | MTL |
|------|-----|----|-----|------|-----|
| | 0.8 | 54 | 108 | 24 | 51 |

Chancellor was the high selling bull at Horseshoe E's 2016 sale. Originally we used him on heifers and found that he had the performance to use on cows too. His calves are consistently vigorous at birth and stamped with the same muscle shape and super feet under them as he possesses. His daughters are growing into nice young cows with beautiful udders.



D

D

LAE **BLAST-OFF** 425B
PMC358879 LAE 425B JANUARY 17, 2014

MXS VERMILLION 527R

MERIT ROUNDUP 9508W PMC326558

MERIT YOLANDA 7244T

SPARROWS LANDMARK 963W

LAE JAZZLAND 123Y PFC393974

STAUFFERS MISS JAZZ 62P

POLLED

| EPDS | BW | WW | YW | MILK | MTL |
|------|-----|----|----|------|-----|
| | 0.8 | 49 | 83 | 15 | 39 |

Blast-Off is a Roundup son that we especially liked to breed second calvers to. His calves are born easily and are very vigorous at birth. We also have daughters that are proving to be excellent mothers.



Lyle, Sheann, and Brill Brosinsky

Box 58, Cactus Lake, SK S0L 0J0

Lyle's Cell: 306-753-7809 Sheann's Cell: 306-753-9387

Email: sheann_sunset@hotmail.com

We are very excited to be a part of this sale, as we have been selling off the farm previously. We ranch about 30km from Macklin by Cactus Lake just inside the Saskatchewan border. We are a family run ranch that is devoted to making bulls for our commercial cattle friends. Bulls that are easy calving but add pounds and performance come weaning time. Our herd started in 2015 with the purchase of females from MJT Cattle Co, Pedersen Livestock & Standard Hill Livestock. We are not about numbers, quality come first and for most. They must have good udders, feet, legs and over all performance, or they are culled. All our bulls are fed chopped brown oats, free choice hay and oats green feed. They are on a full herd health program from Border Vet Clinic including minerals and no added protein supplements.

A very special thank you to Mick and Deb Trefiak and Kurt and Becky Pedersen. We look to you as mentors and friends. Your support and knowledge has been greatly appreciated.

Please feel free to stop by the ranch or give us a call anytime to check out the bulls.

Sincerely,
Lyle, Sheann & Brill Brosinsky





LOT 24

24

2184820

LSB **HITMAN** 49H
LSB 49H JANUARY 19, 2020

BAR-H CROSSFIRE 29C

MJT CROSSFIRE 674E 1998790

MJT BONNIE 316C

20/20 TOUCHDOWN 20X

MJT LUCKY 338C 1890807

MJT LUCKY 524Z

| | |
|-------------------|-----|
| BW | 100 |
| ACT WW | 870 |
| AGE OF DAM | 5 |

| PE | BW | WW | YW | MCE | MILK |
|----|-----|----|----|------|------|
| | 0.2 | 45 | 81 | 10.0 | 24 |

This brute of a bull has a long, deep body with lots of style. He's going to add pounds to his calves.



LOT 25

25

2184821

LSB **HUSTLER** 52H
LSB 52H JANUARY 21, 2020

BAR-H CROSSFIRE 29C

MJT CROSSFIRE 674E 1998790

MJT BONNIE 316C

MJT BANDO 302C

LSB VIXON 16F 2077909

PEDERSEN VIXON 74C

| | |
|-------------------|-----|
| BW | 74 |
| ACT WW | 720 |
| AGE OF DAM | 2 |

| EPDS | BW | WW | YW | MCE | MILK |
|------|-----|----|----|-----|------|
| | 1.8 | 39 | 74 | 9.0 | 25 |

This Rascal comes off an excellent cow family. He's a heifer's first calf and she did a great job on him. He's got lots of hair, he's deep, long and very smooth. He will work very well on heifers.



LOT 26

26

2184822

LSB **HAYWIRE** 53H
LSB 53H JANUARY 21, 2020

BAR-H CROSSFIRE 29C

MJT CROSSFIRE 674E 1998790

MJT BONNIE 316C

BAR-E-L MUCHMORE 155A

PEDERSEN UTOPIA 88C 1836819

PEDERSEN UTOPIA 152Z

| | |
|-------------------|-----|
| BW | 82 |
| ACT WW | 860 |
| AGE OF DAM | 5 |

| EPDS | BW | WW | YW | MCE | MILK |
|------|-----|----|----|-----|------|
| | 0.8 | 39 | 72 | 9.0 | 27 |

A good rip of a bull here off an extremely excellent dam. He's big bodied, full of muscle and style. He's going to get out there and go to work adding pounds to his calves.



LOT 27

27

LSB **HARD CORE** 57H
2184823 LSB 57H JANUARY 25, 2020

BAR-H CROSSFIRE 29C
MJT CROSSFIRE 674E 1998790
MJT BONNIE 316C
S A V 9969 RITO 2242
PEDERSEN VIXON 74C 1836809
ALLANDAILE VIXON 39A

| BW | 86 |
|------------|-----|
| ACT WW | 810 |
| AGE OF DAM | 5 |

| EPDS | BW | WW | YW | MCE | MILK |
|------|-----|----|----|------|------|
| | 2.8 | 47 | 89 | 10.5 | 27 |

He's long, big bodied and smooth. His dam has several daughters now working in our herd, including Brill's show cow. She produces one of the best each year.

28

LSB **HEARTRATE** 58H
2184824 LSB 58H JANUARY 28, 2020

BAR-H CROSSFIRE 29C
MJT CROSSFIRE 674E 1998790
MJT BONNIE 316C
MJT BANDO 302C
LSB BLACKHEART 20F 2077919
LSB BLACK HEART 1D

| BW | 62 |
|------------|-----|
| ACT WW | 750 |
| AGE OF DAM | 2 |

| EPDS | BW | WW | YW | MCE | MILK |
|------|------|----|----|-----|------|
| | -1.0 | 39 | 70 | 7.5 | 25 |

This rascal is off a first timer and she did her job well. He came out small but put on the pounds come weaning time. He's smooth shouldered, square bodied, flat topped and deep. He's going to calve heifers like a dream.



LOT 28

29

LSB **HARD LINE** 59H
2184825 LSB 59H JANUARY 30, 2020

BAR-H CROSSFIRE 29C
MJT CROSSFIRE 674E 1998790
MJT BONNIE 316C
MJT BANDO 302C
LSB LUCKY 22F 2077911
MJT LUCKY 338C

| BW | 63 |
|------------|-----|
| ACT WW | 710 |
| AGE OF DAM | 2 |

| EPDS | BW | WW | YW | MCE | MILK |
|------|------|----|----|-----|------|
| | -1.4 | 36 | 65 | 9.0 | 24 |

He's off a first calver. He came out small, but his mamma did an excellent job and it showed come weaning time. He's got lots of hair and very smooth. He will be a great heifer bull.



LOT 29



LOT 30

30 **LSB HEADS UP 62H**
2184826 **LSB 62H** FEBRUARY 7, 2020

BAR-H CROSSFIRE 29C
MJT CROSSFIRE 674E 1998790
MJT BONNIE 316C
MJT BANDO 302C
LSB LADY BIRD 7E 1978303
MJT LADY BIRD 369C

| | |
|-------------------|-----|
| BW | 90 |
| ACT WW | 700 |
| AGE OF DAM | 3 |

| EPDS | BW | WW | YW | MCE | MILK |
|------|-----|----|----|-----|------|
| | 3.1 | 41 | 75 | 5.5 | 23 |

This is the second bull off this cow in our offering this year. She does her job well. He's got a nice small head, solid top and is very smooth.



LOT 31

31 **LSB HEIST 63H**
2185016 **LSB 63H** FEBRUARY 8, 2020

BAR-H CROSSFIRE 29C
MJT CROSSFIRE 674E 1998790
MJT BONNIE 316C
MJT AJ 411Z
MJT DARK DUCHESS 343C 1929674
MJT DARK DUCHESS 550Z

| | |
|-------------------|-----|
| BW | 80 |
| ACT WW | 770 |
| AGE OF DAM | 5 |

| EPDS | BW | WW | YW | MCE | MILK |
|------|-----|----|----|-----|------|
| | 0.1 | 38 | 69 | 9.0 | 25 |

This bull comes off a very moderate cow who puts everything into her calf. He's long and smooth with a very solid top.



LOT 32

32 **LSB HOSS 64H**
2184829 **LSB 64H** FEBRUARY 8, 2020

BAR-H CROSSFIRE 29C
MJT CROSSFIRE 674E 1998790
MJT BONNIE 316C
20/20 TOUCHDOWN 20X
MJT LADY BIRD 369C 1890806
MJT LADY BIRD 513Z

| | |
|-------------------|-----|
| BW | 106 |
| ACT WW | 810 |
| AGE OF DAM | 5 |

| EPDS | BW | WW | YW | MCE | MILK |
|------|-----|----|----|-----|------|
| | 4.5 | 50 | 90 | 8.5 | 25 |

This big rascal is stout, long and deep. He's got a solid top and moves out freely.



LOT 33

33 **LSB HAVOC 66H**
2184830 **LSB 66H** FEBRUARY 23, 2020

BAR-H CROSSFIRE 29C
MJT CROSSFIRE 674E 1998790
MJT BONNIE 316C
HF ESPIONAGE 24D
PEDERSEN BELLE 7F 2030346
WILDMERE RUBY 83Z

| | |
|-------------------|-----|
| BW | 70 |
| ACT WW | 650 |
| AGE OF DAM | 2 |

| EPDS | BW | WW | YW | MCE | MILK |
|------|------|----|----|-----|------|
| | -0.2 | 34 | 62 | 9.0 | 23 |

This is a heifer's first calf. He's off a cow we bought from Pedersens as an open heifer. He is going to be an excellent heifer bull. He's very smooth, nice small head, long and a good spring of rib.

34

 LSB **HILLTOP** 67H
 2184831 LSB 67H MARCH 24, 2020

 BAR-E-L MUCHMORE 155A
PEDERSEN EXTRA DIMENSION 416E 1956000
 PEDERSEN UNDISCOVERED 3U
 MJT BANDO 302C
LSB BEBE 27F 2077906
 STANDARD HILL BEBE 320B

| | |
|-------------------|-----|
| BW | 84 |
| ACT WW | 630 |
| AGE OF DAM | 2 |

| EPDS | BW | WW | YW | MCE | MILK |
|------|-----|----|----|-----|------|
| | 2.6 | 37 | 67 | 7.5 | 24 |

A later calf off our PED Extra Dimension 416E bull. He's off a first calver. He's got lots of hair, moderate bull with lots of length.



LOT 34

35

 LSB **H-BOMB** 68H
 2184832 LSB 68H MARCH 24, 2020

 JL SOURCE 4092
PEDERSEN EXPLORER 435E 1956014
 PEDERSEN COUNTESS 63A
 MJT BANDO 302C
LSB BARBARA ROSE 23F 2077917
 MJT BARBARA ROSE 388C

| | |
|-------------------|-----|
| BW | 80 |
| ACT WW | 650 |
| AGE OF DAM | 2 |

| EPDS | BW | WW | YW | MCE | MILK |
|------|-----|----|----|-----|------|
| | 2.8 | 44 | 79 | 7.0 | 19 |

The only PED Explorer 435E son we have on offer this year. His momma was a first timer. He's a later bull, but we have been extremely happy with the Explorer daughters we have.



LOT 35

36

 LSB **GAMBLER** 29G
 2133670 LSB 29G JANUARY 22, 2019

 BAR-E-L MUCHMORE 155A
PEDERSEN EXTRA DIMENSION 416E 1956000
 PEDERSEN UNDISCOVERED 3U
 MJT BANDO 302C
LSB DARK DUCHESS 2E 1978301
 MJT DARK DUCHESS 343C

| | |
|-------------------|-----|
| BW | 80 |
| ACT WW | 660 |
| AGE OF DAM | 2 |

| EPDS | BW | WW | YW | MCE | MILK |
|------|------|----|----|-----|------|
| | -0.1 | 29 | 55 | 6.0 | 24 |

This two year old is a heifers first calf. He's not going to be very big framed as his mother is a very moderate cow. This cow family tends to have shorter gestation. He's deep bodied, very smooth and easy doing fella. He would work well on heifers.



LOT 36

37

 LSB **GUNNER** 34G
 2111534 LSB 34G FEBRUARY 6, 2019

 BAR-E-L MUCHMORE 155A
PEDERSEN EXTRA DIMENSION 416E 1956000
 PEDERSEN UNDISCOVERED 3U
 MJT BANDO 302C
LSB BARBARA ROSE 9E 1978306
 MJT BARBARA ROSE 388C

| | |
|-------------------|-----|
| POLLED | |
| BW | 90 |
| ACT WW | 731 |
| AGE OF DAM | 2 |

| EPDS | BW | WW | YW | MCE | MILK |
|------|-----|----|----|-----|------|
| | 2.6 | 46 | 80 | 7.0 | 27 |

We think a lot of this big fella. We showed him as a calf at Stockade Round Up. He was a heifer's first calf. He's a big, easy doing bull with lots of depth and width to his hind end. He is going to add pounds to his calves.



LOT 37



LOT 38



A



B



C

38

2133672

LSB **GROVE** 38G
LSB 38G FEBRUARY 16, 2019

BAR-E-L MUCHMORE 155A
PEDERSEN EXTRA DIMENSION 416E 1956000
PEDERSEN UNDISCOVERED 3U
MJT BANDO 302C
LSB LADY BIRD 7E 1978303
MJT LADY BIRD 369C

| | |
|-------------------|-----|
| BW | 88 |
| ACT WW | 570 |
| AGE OF DAM | 2 |

| EPDS | BW | WW | YW | MCE | MILK |
|------|-----|----|----|-----|------|
| | 2.0 | 29 | 58 | 4.0 | 23 |

This guy is also a heifer's first calf. He's got a nice small head and is very smooth shouldered. He's got a solid topline with a great spring of rib.

REFERENCE SIRES

A

MJT **CROSSFIRE** 674E
1998790 MJTA 674E APRIL 21, 2017

BAR-H CROSSFIRE 63A
BAR-H CROSSFIRE 29C 1871953
BAR-H ECHO 97A
DFCC 176W SIZZLER 52Y
MJT BONNIE 316C 1892289
MJT BONNIE 311Y

| EPDS | BW | WW | YW | MCE | MILK |
|------|-----|----|----|------|------|
| | 0.9 | 41 | 75 | 10.0 | 25 |

We purchased this fella at the MJT sale for \$22,000.00 in 2019. Mick then decided to buy 1/2 of him back to use in his spring program. His calving ease is second to non and he passes that to his offspring. He's easy doing, big muscled, and balanced he adds pounds to his calves coming weaning time.

B

PEDERSEN **EXTRA DIMENSION** 416E
1956000 PED 416E JANUARY 9, 2017

SOUTHLAND THRILLER 83X
BAR-E-L MUCHMORE 155A 1761442
BAR-E-L DUCHESS 160U
MJT WIDE SPREAD 100S
PEDERSEN UNDISCOVERED 3U 1469561
EGGEN QUANTUM MISS 58S

| EPDS | BW | WW | YW | MCE | MILK |
|------|-----|----|----|-----|------|
| | 0.7 | 31 | 59 | 8.0 | 26 |

We purchased him from Kurt & Becky Pedersen in the spring of 2018. He's long, deep & full of muscle. We used him on some commercial cows last year and his steers averaged 710lb We unfortunately lost him due to a breeding injury.

C

PEDERSEN **EXPLORER** 435E
1956014 PED 435E JANUARY 17, 2017

S A V RESOURCE 1441
JL SOURCE 4092 1783862
FGAF TIBBIE 901W
DBRL ALASKAN 30X
PEDERSEN COUNTESS 63A 1726992
WILDMERE COUNTESS 11W

| EPDS | BW | WW | YW | MCE | MILK |
|------|-----|----|----|-----|------|
| | 3.2 | 51 | 90 | 8.0 | 12 |

We purchased from Kurt & Becky Pedersen in the spring of 2018. He's a meat machine, very easy doing. He's deep, long & big ribbed. We have used him on purebreds & our commercial cows and are very happy with his females.



Owen & Bryce Mawbey

Box 1367, Unity, SK S0K 4L0

Owen's Cell: 306-228-8235 Bryce's Cell: 587-433-8600

Email: brycemawbey@hotmail.com

Hello and welcome to the 5th Annual Poplar Bluff Stock Farm & Guests Bull Sale. We are extremely excited to be joining L & S Livestock in this sale and want to thank Poplar Bluff Stock Farm for the opportunity to offer up this strong set of coming two year old bulls. For those who don't know us, our cattle operation consists of roughly 300 commercial and 60 purebred cows. In 2005, we started purchasing top proven females from production and dispersal sales of Crescent Creek Angus, Double AA Angus, Saskalta Farms, Lookout Stock Farm, Sisson Bros, Glen Islay Angus and Remington Land & Cattle. We have worked hard at building the herd to where it is at today. With myself working off the farm during calving, Dad is left by himself for good stretches. He is a very selective cattleman and we expect a lot from our cows – no babysitting and no excuses or they do not stay. We have a checklist that a cow needs to meet in order to stick around. The dams that are pictured in the sale catalogue will give you a good idea of the type of cow we like – cows that are consistent producing at the top end of the whole herd - maximizing return with no or very little help during calving.

The bulls on offer are good, honest ranch bulls that have been developed with longevity in mind. We feel these beef bulls are the type of cattle that will satisfy the needs of the cow-calf producer, feedlot and packer, while also siring top end uniform replacement heifers. The bulls are currently on a daily TMR ration that consists of oat silage, brown oats and a 14% beef pellet not exceeding 1% of their body weight.

If you have any questions or requests, we are more than happy to help. We stand behind our cattle which are raised to work and we look forward to working with you on sale day and in the future. Please don't hesitate to come see the cattle at the farm prior to the sale.

Sincerely,

Owen & Bryce Mawbey

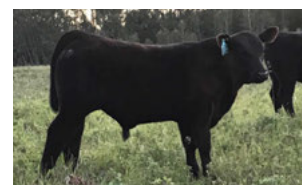
Note: The weaning weights of the bulls were taken on December 4, 2019

We reserve the right to collect in herd use semen on the bulls sold, at the buyers convenience and our expense.





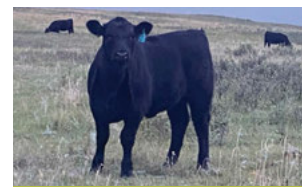
LOT 39



60G pictured as a calf



Dam of 60G



Maternal sister to 60G

39

BRONYX 2128193 **RADIANCE** 60G
TOT 60G APRIL 16, 2019

S A V RADIANCE 0801

COUNTRY LANE RADIANCE 33E 1965812

COUNTRY LANE FLO 29W

SAR CASTLEROCK 173T

BRONYX BARDOLIA 60X 1578187

BRONYX BARDOLIA 60K

| BW | 89 |
|-------------------|-----|
| ACT WW | 875 |
| AGE OF DAM | 9 |

| EPDS | BW | WW | YW | MCE | MILK |
|------|-----|----|----|-----|------|
| | 1.1 | 41 | 68 | 9.0 | 22 |

Herd bull candidate who checks every box we look for when selecting a herd bull. 60G is a tank with loads of volume and excellent muscle expression, wide top with a big square hip. He is very smooth, stylish and quiet. We believe this guy will stamp his calves and leave a set of females that will make your jaw drop. His dam, 60K is flawless. She is quiet as a kitten, long, easy keeping with loads of volume, perfect footed with an excellent udder. She always knows where her calf is and doesn't leave it out in the cold wind. She is the kind of cow that will lay with her calf and block the wind. Her dam, 60K was the exact same way. 60K never broke down and was culled due to her age of 17 years. Longevity runs strong in this cow line. Something to note is that the bull that is selling with no papers is off 60PK. She is a 17 year old maternal sister to 60X who is still going strong. The only reason she isn't registered is because her sire, Double AA Rito 637'00 was sold before we started building the purebred herd and never pulled any hair.



LOT 40

40

BRONYX 2128192 **RADIANCE** 5G
TOT 5G APRIL 15, 2019

S A V RADIANCE 0801

COUNTRY LANE RADIANCE 33E 1965812

COUNTRY LANE FLO 29W

SOO LINE YELLOWSTONE 9286

ROYAL S PRIDE 5A 1774115

ROYAL PRIDE 11R

| | |
|-------------------|-----|
| BW | 88 |
| ACT WW | 758 |
| AGE OF DAM | 6 |

| EPDS | BW | WW | YW | MCE | MILK |
|------|-----|----|----|-----|------|
| | 1.5 | 37 | 66 | 7.0 | 18 |

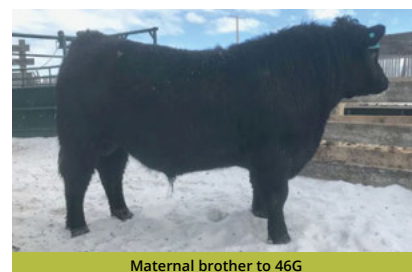
He is a long, stretchy, stylish, free moving bull. His dam, 5A is a moderate, easy keeping cow with an excellent udder. She is a direct daughter of Pride 11R who was the lead off cow at the Royal Angus Dispersal in 2017. This highly maternal and predictable cow family is a foundation cow line that was started in the early 1970's.



LOT 41



Dam of 46G



Maternal brother to 46G

41

BRONX BARDOLIER 46G
2115734 TOT 46G APRIL 17, 2019

FLEURY BANDOLIER 27A

FLEURY BANDOLIER 61D 1945491
DOUBLE AA ANNIE K 224'05

RONAN TEX 56A

REMINGTON ANNIE K 471W 1537249
DOUBLE AA ANNIE K 684'99

| BW | 91 |
|------------|-----|
| ACT WW | 808 |
| AGE OF DAM | 10 |

| EPDS | BW | WW | YW | MCE | MILK |
|------|-----|----|----|-----|------|
| | 3.5 | 41 | 66 | 3.0 | 13 |

Herd bull candidate with a herd bull presence. 46G is an extremely easy keeper packed full of meat. He is a deep, big hippered, soggy, high capacity bull with perfect feet. His dam, 471W is one of the very best. She has a perfect udder and perfect foot. She is extremely quiet and easy keeping with length of spine and a very wide top. We feel 46G will sire steers that feedlots will admire and females that are like peas in a pod. Bronx Eric 46E, who is a maternal brother to 46G, was purchased by Cam Hill of Hillbrook Cattle Company in 2019. The females this bull has left are the right kind and Cam is building quite a herd. We were fortunate enough to purchase 46E back last spring. 471W is a special cow that has now entered our ET program.

42

BRONX BARDOLIER 17G
2115741 TOT 17G MAY 5, 2019

FLEURY BANDOLIER 27A

FLEURY BANDOLIER 61D 1945491
DOUBLE AA ANNIE K 224'05

B.B.A.R. LEGACY 4234

B.B.A.R. RUBY BELLE 6217 1337801
B.B.A.R. RUBY BELLE 317

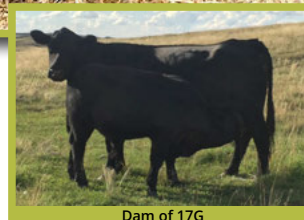
| BW | 94 |
|------------|-----|
| ACT WW | 830 |
| AGE OF DAM | 13 |

| EPDS | BW | WW | YW | MCE | MILK |
|------|-----|----|----|-----|------|
| | 2.4 | 36 | 57 | 6.0 | 15 |

This bull is highly maternal with a real nice style to him. He is B.B.A.R Ruby Belle 6217's last calf. She was one of our favourite cows. It was a sad day when she left.



LOT 42



Dam of 17G



LOT 43

43

BRONYX **RADIANCE** 58G
2128196 TOT 58G APRIL 22, 2019

S A V RADIANCE 0801
COUNTRY LANE RADIANCE 33E 1965812
COUNTRY LANE FLO 29W
CRESCENT CREEK PACESETTER 20U
BRONYX ROSEBUD 58Z 1700620
CRESCENT CREEK ROSEBUD 25R

| BW | 90 |
|-------------------|-----|
| ACT WW | 851 |
| AGE OF DAM | 7 |

| EPDS | BW | WW | YW | MCE | MILK |
|------|-----|----|----|------|------|
| | 2.1 | 47 | 75 | 10.0 | 19 |

TOT 58G is double bred Crescent Creek Rosebud 115F. He is a very high capacity, teddy bear of a bull. His dam is a big barreled, deep cow with a good udder. We believe he will sire steers with growth that are soggy. Double bred 115F was no fluke - the females should be outstanding.



LOT 44

44

BRONYX **RADIANCE** 41G
2128181 TOT 41G APRIL 1, 2019

S A V RADIANCE 0801
COUNTRY LANE RADIANCE 33E 1965812
COUNTRY LANE FLO 29W
LSF MARSHALL 15 93Z
BRONYX ROSEBUD 60C 1874964
CRESCENT CREEK ROSEBUD 4R

| BW | 86 |
|-------------------|-----|
| ACT WW | 877 |
| AGE OF DAM | 4 |

| EPDS | BW | WW | YW | MCE | MILK |
|------|-----|----|----|-----|------|
| | 1.8 | 42 | 68 | 7.0 | 19 |

TOT 41G is one of the longest bulls on offer. He is thick and moves well. His dam is a moderate cow that produces. Crescent Creek Rosebud 4R is his granddam. 4R sons have sold to Ryan Partington and Otto Lavalée. We have also used sons on our commercial cows who left excellent steers and females.



Maternal Granddam of 41G



LOT 45

The Glen Islay Pride cow family is another top end family. Glen Islay has been raising Angus cattle since 1968 and you will not find a bad udder or foot on the place. These cattle have sustainable balance of growth, functional efficiency and longevity. TOT 89G and TOT 37G are long, free moving bulls with excellent muscle expression and depth. These bulls will sire heavy steers and excellent females.

45

BRONYX **RADIANCE** 89G
2128189 TOT 89G APRIL 11, 2019

S A V RADIANCE 0801
COUNTRY LANE RADIANCE 33E 1965812
COUNTRY LANE FLO 29W
GLEN ISLAY WINSTON 14U
GLEN ISLAY PRIDE 89Y 1634821
GLEN ISLAY PRIDE 28L

| BW | 92 |
|-------------------|-----|
| ACT WW | 870 |
| AGE OF DAM | 8 |

| EPDS | BW | WW | YW | MCE | MILK |
|------|-----|----|----|-----|------|
| | 1.7 | 45 | 79 | 6.0 | 19 |



LOT 46

46

BRONYX **COALITION** 37G
2128215 TOT 37G APRIL 16, 2019

U-2 SYNDICATE 238B
COUNTRY LANE COALITION 8E 1965779
COUNTRY LANE QUEEN 16Y
SPRUCE VIEW WINTON 169B
BRONYX PRIDE 37D 1938415
GLEN ISLAY PRIDE 89Y

| BW | 90 |
|-------------------|-----|
| ACT WW | 730 |
| AGE OF DAM | 3 |

| EPDS | BW | WW | YW | MCE | MILK |
|------|-----|----|----|-----|------|
| | 3.1 | 31 | 59 | 5.0 | 21 |



LOT 47



LOT 48



LOT 49



LOT 50

47

BRONYX **BARDOLIER** 27G
2115737 TOT 27G APRIL 24, 2019

FLEURY BANDOLIER 27A
FLEURY BANDOLIER 61D 1945491
DOUBLE AA ANNIE K 224'05
FLEURY BLACKMAN 76W
RANCHERS CHOICE ANNIE K 132Z 1658348
DOUBLE AA ANNIE K 393'05

| | |
|------------|-----|
| BW | 90 |
| ACT WW | 812 |
| AGE OF DAM | 7 |

| EPDS | BW | WW | YW | MCE | MILK |
|------|-----|----|----|-----|------|
| | 3.2 | 40 | 74 | 7.0 | 13 |

This bull is just a tank. He's got mass, length, hair and depth. His dam is your typical Annie K female. She is a high volume, long, deep, wide based feminine cow. Something to take note of is that this 27G and our feature bull, 46G trace back to the same cow, Double AA Annie K 684'99.

48

BRONYX **BARDOLIER** 28G
2115733 TOT 28G APRIL 17, 2019

FLEURY BANDOLIER 27A
FLEURY BANDOLIER 61D 1945491
DOUBLE AA ANNIE K 224'05
SASKALTA ESTON 105W
RANCHERS CHOICE ERICA 218A 1764122
SASKALTA ERICA 472U

| | |
|------------|-----|
| BW | 94 |
| ACT WW | 830 |
| AGE OF DAM | 6 |

| EPDS | BW | WW | YW | MCE | MILK |
|------|-----|----|----|-----|------|
| | 4.2 | 40 | 66 | 5.0 | 13 |

A long, smooth bull with a herd bull presence to him that won't be hard to find on sale day. His dam, Ranchers Choice Erica 218A is a high volume, long, deep, wide based, feminine cow.

49

BRONYX **BARDOLIER** 78G
2115747 TOT 78G MAY 31, 2019

FLEURY BANDOLIER 27A
FLEURY BANDOLIER 61D 1945491
DOUBLE AA ANNIE K 224'05
DOUBLE AA BARDOLINE 387'06
DOUBLE AA ANNIE K 812'09 1520677
DOUBLE AA ANNIE K 807'00

| | |
|------------|-----|
| BW | 88 |
| ACT WW | 610 |
| AGE OF DAM | 10 |

| EPDS | BW | WW | YW | MCE | MILK |
|------|-----|----|----|-----|------|
| | 2.4 | 35 | 56 | 7.0 | 8 |

This is the youngest bull in the sale that just has that Double AA look to him. We have followed the Double AA program since the early 90's. There are a lot of real good cattle in this bull.

50

BRONYX **BANDOLIER** 68G
2115746 TOT 68G MAY 26, 2019

FLEURY BANDOLIER 27A
FLEURY BANDOLIER 61D 1945491
DOUBLE AA ANNIE K 224'05
CRESCENT CREEK PACESETTER 20U
BRONYX ELENA 33Y 1633770
BRONYX ELENA 333U

| | |
|------------|-----|
| BW | 89 |
| ACT WW | 601 |
| AGE OF DAM | 8 |

| EPDS | BW | WW | YW | MCE | MILK |
|------|-----|----|----|-----|------|
| | 2.4 | 27 | 47 | 8.0 | 12 |

A thick, easy doing, high maternal bull. Crescent Creek Rosebud 115F on the top side and Double AA Elena 13'99 on the bottom side who is an elite dam. She raised many herd sires for Double AA Angus. The females in the replacement pen is proof that this cow line is top notch.

51

BRONYX **RADIANCE** 20G
2128197 TOT 20G APRIL 22, 2019

S A V RADIANCE 0801

COUNTRY LANE RADIANCE 33E 1965812

COUNTRY LANE FLO 29W

K C F BENNETT TOTAL

ROYAL BLACKBIRD 5U 1483218

ROYAL BLACKBIRD 20N

| | |
|------------|-----|
| BW | 88 |
| ACT WW | 708 |
| AGE OF DAM | 11 |

| EPDS | BW | WW | YW | MCE | MILK |
|------|-----|----|----|-----|------|
| | 1.3 | 36 | 69 | 9.0 | 18 |

He is a thick, deep, easy keeping bull. His dam, 5U who is a high volume cow was purchased through the Royal Angus Dispersal in 2017.



LOT 51

52

BRONYX **BANDOLIER** 70G
2115735 TOT 70G APRIL 21, 2019

FLEURY BANDOLIER 27A

FLEURY BANDOLIER 61D 1945491

DOUBLE AA ANNIE K 224'05

LOOKOUT CANUCK 40Y

BRONYX ANNIE K 95A 1754270

DOUBLE AA ANNIE K 195'08

| | |
|------------|-----|
| BW | 87 |
| ACT WW | 729 |
| AGE OF DAM | 6 |

| EPDS | BW | WW | YW | MCE | MILK |
|------|-----|----|----|-----|------|
| | 2.2 | 31 | 48 | 8.0 | 12 |

A bull that as a calf had that herd bull presence. He got sick when he got home from pasture and it set him back or he would have been a feature bull. He is backed by the powerful Double AA Annie K cow family; 70G and 78G come from the same cow line, one of Bill's favourites.



LOT 52

53

BRONYX **BARDOLIER** 67G
2115743 TOT 67G MAY 12, 2019

FLEURY BANDOLIER 27A

FLEURY BANDOLIER 61D 1945491

DOUBLE AA ANNIE K 224'05

DOUBLE AA RITO 324'02

SASKALTA MS MORRISON 167U 1458478

SASKALTA MS MORRISON 120N

| | |
|------------|-----|
| BW | 91 |
| ACT WW | 786 |
| AGE OF DAM | 11 |

| EPDS | BW | WW | YW | MCE | MILK |
|------|-----|----|----|-----|------|
| | 2.6 | 41 | 67 | 4.0 | 15 |

This bull's dam is a real beef cow. She is long, deep and wide based. Her sons are really alert bulls. 67G is no different and will cover lots of cows.



LOT 53

54

BRONYX **BARDOLIER** 71G
2115744 TOT 71G MAY 15, 2019

FLEURY BANDOLIER 27A

FLEURY BANDOLIER 61D 1945491

DOUBLE AA ANNIE K 224'05

SASKALTA FAME 369P

SASKALTA KATHLENE 64U 1458729

SASKALTA KATHLEEN 88L

| | |
|------------|-----|
| BW | 88 |
| ACT WW | 742 |
| AGE OF DAM | 11 |

| EPDS | BW | WW | YW | MCE | MILK |
|------|-----|----|----|-----|------|
| | 2.8 | 42 | 61 | 7.0 | 15 |

This is a performance bull. His dam is a big, long, deep, feminine cow that we just love.



LOT 54



LOT 55

55

BRONYX
2128194

RADIANCE 61G

TOT 61G

APRIL 18, 2019

S A V RADIANCE 0801

COUNTRY LANE RADIANCE 33E 1965812

COUNTRY LANE FLO 29W

LOOKOUT PACESETTER 258M

LOOKOUT PATRICIA 61S 1334207

WILLABAR PATRICIA 77J

| | |
|-------------------|-----|
| BW | 88 |
| ACT WW | 691 |
| AGE OF DAM | 13 |

| EPDS | BW | WW | YW | MCE | MILK |
|------|-----|----|----|-----|------|
| | 1.8 | 33 | 60 | 9.0 | 18 |

A smooth, free moving, alert bull that will be a breeder. He is always watching the heifer pen and forgets to eat. His dam, Lookout Patricia 61S is a moderate cow that's smooth as glass with a beautiful udder that's still going strong at 15 years of age.



LOT 56

56

BRONYX
2115740

BARDOLIER 31G

TOT 31G

APRIL 28, 2019

FLEURY BANDOLIER 27A

FLEURY BANDOLIER 61D 1945491

DOUBLE AA ANNIE K 224'05

DOUBLE AA RITO 324'02

SASKALTA QUEENETTE 29T 1565608

SASKALTA QUEENETTE 814H

| | |
|-------------------|-----|
| BW | 91 |
| ACT WW | 717 |
| AGE OF DAM | 12 |

| EPDS | BW | WW | YW | MCE | MILK |
|------|-----|----|----|-----|------|
| | 3.2 | 34 | 60 | 6.0 | 11 |

A really long, smooth bull. His dam, 29T was the lead off cow in the Ranchers Choice Dispersal. She is a high volume cow. She is showing her age now but has not broken down.



LOT 57

57

BRONYX
UNREGISTERED

COMMERCIAL BULL

MAY 6, 2019

FLEURY BANDOLIER 27A

FLEURY BANDOLIER 61D 1945491

DOUBLE AA ANNIE K 224'05

DOUBLE AA RITO 637'00

TOT 60P

BRONYX BARDOLIA 60K

| | |
|-------------------|-----|
| BW | 93 |
| ACT WW | 744 |
| AGE OF DAM | 15 |

| EPDS | BW | WW | YW | MCE | MILK |
|------|----|----|----|-----|------|
| | | | | | |

Sells with no papers. This bull is a deep, soggy, stylish bull. His dam, 60PK is a maternal sister to our feature bull's dam, 60X. The reason she isn't registered is because her sire Double AA Rito 637'00 was sold before we started building the purebred herd and never pulled any hair. 60PK is still going strong on the ranch at 17 years of age. Longevity runs strong in this cow line.

REFERENCE SIRES

A

FLEURY
1945491

BANDOLIER 61D

FAR 61D

APRIL 24, 2016

JOHNSTON BANDOLIER 170F

FLEURY BANDOLIER 27A 1743774

DOUBLE AA ELENA 38'02

DOUBLE AA BARDOLINE 321'02

DOUBLE AA ANNIE K 224'05 1267133

DOUBLE AA ANNIE K 548'03

| EPDS | BW | WW | YW | MCE | MILK |
|------|-----|----|----|-----|------|
| | 2.9 | 39 | 64 | 7.0 | 8 |



A

BCOUNTRY LANE **RADIANCE**^{33E}
1965812 VAP 33E JANUARY 20, 2017

S A V BRILLIANCE 8077

S A V RADIANCE 0801 1658271

S A V ELBA 801

JL TRAVELER 07116

COUNTRY LANE FLO 29W 1493660

COUNTRY LANE FLO 5K

| EPDS | BW | WW | YW | MCE | MILK |
|------|-----|----|----|------|------|
| | 0.9 | 51 | 88 | 10.0 | 20 |

**B****C**COUNTRY LANE **COALITION**^{8E}
1965779 APCC 8E JANUARY 6, 2017

HF SYNDICATE 213Z

U-2 SYNDICATE 238B 1795606

U2 RUBY 216Z

SALT CREEK BOB 7003

COUNTRY LANE QUEEN 16Y 1621892

COUNTRY LANE QUEEN LASS 12J

| EPDS | BW | WW | YW | MCE | MILK |
|------|-----|----|----|-----|------|
| | 2.1 | 36 | 65 | 9.0 | 24 |

Terms & Conditions

TERMS:

The terms of the sale are cash or cheque payable at par at the sale unless satisfactory credit arrangements have been made previous to the sale. All settlements must be made with the clerk of the sale before any cattle will be released. The Auctioneer shall have the right to refuse bids from anyone who has a previous record of default in payment or who has not made credit clearance prior to the sale with the owner. All monies are in Canadian funds. The right of property shall not pass until after settlement is made.

DISPUTES:

In case of disputes, bidding will be reopened between the parties involved. If no further bid is made, the buyer will be the person from whom the auctioneer accepted the last bid. The auctioneer's decision in such matters is final.

PURCHASER'S RISK:

Each animal becomes the risk of the purchaser as soon as sold. Animals will be cared for at the purchaser's risk for a reasonable time.

ANNOUNCEMENTS:

Errors discovered in the catalogue will be corrected by announcements from the auction stand at sale time and such corrections will take precedence over the printed matter in the catalogue. Buyers are cautioned to pay close attention to announcements.

CERTIFICATE OF REGISTRY:

Registered animals will carry papers issued by the Canadian Charolais Association or the Canadian Angus Association. A certificate of registry duly transferred will be furnished to the buyers of each animal after settlement has been made.

GUARANTEE:

All animals will carry standard breeding guarantee as specified by the Canadian Charolais Association or the Canadian Angus Association. At no time shall the seller's liability exceed the purchase price of the animal. The seller is not responsible for damage caused by foreign bodies after the animal has been sold nor for sickness not apparent at sale time.

EXCEPTION TO GUARANTEE:

In cases where the animal has been subjected to any hormonal or surgical reproductive techniques after the sale, this guarantee shall be null and void.

ACCIDENTS:

Although every precaution will be taken to protect the safety and comfort of buyers, neither the Owners, Auctioneer, nor Sales Staff assume any responsibility in this matter and disclaims any liability legal or otherwise in the event of accident or loss of property.

RIGHTS & OBLIGATIONS:

The above terms and conditions of the sale shall constitute a contract between the buyer and the seller and be equally binding to both. Resale of animals following purchase in this sale shall constitute a separate transaction, which is not covered by the terms and conditions of this sale.

Return Undeliverable
Canadian Addresses to:
Poplar Bluff Stock Farm
Box 55, Chauvin, AB T0B 0V0



Thank you to the following for your past support...

| | |
|-----------------------------|------------------------------------|
| *GEORGE PORUCHNEK | CCC FARMS LTD |
| *BYRON & MICHELLE CLARKE | DALE STAMMERS |
| *ASH COOPER | BERNARD LEGGETT ENTERPRISES |
| DARREN DANIEL | BRIAN NATTRESS |
| * JACKSON BROS | CHESTERMAN FARMS |
| * LES COOK | * MICHAEL WARRINGTON |
| CRAIG BROWN | BRIAN GIBB |
| * KENNY SIDENER | DARRYL TKACH |
| BLAIN ROTH FARMS LTD | * DEAN & TERRI FORRESTER |
| MYRON FAWCETT HOLDINGS INC. | CLIFF WHITNEY |
| * MICHIENSEN MEADOWS LTD | * GOODBRAND LAND & CATTLE |
| F & B FARMS LTD | * NORMAN SACCUCCI |
| WHERE TO ENTERPRISE LTD | * DENOTES MULTIPLE BULLS PURCHASED |